

## TF81 Command Brief

~~NATO/ISAF SECRET~~

# PURPOSE

- Our perspective.
- We will be open and candid.
- Using our in theatre expertise we aim to provide the opportunity for robust discussion of the issues.
- In turn allowing you to make informed decisions.

# SCOPE

- ISAF SOF Laydown
- Mission
- Task Force 81 and <sup>PSR(S)1, PSR(S)2, PSR(S)3</sup> (CRU)
- Detention Operations
- Future Operations
  - Obj Burnham
- TF81 Extension Options Planning

Unrelated  
Operations

RESTRICTED

**PSR(S)1, PSR(S)2, PSR(S)3**



# MISSION

## **NZDF Mission:**

The NZDF is to provide a SOTF to ISAF in Afghanistan from September 2009 for up to 18 months in order to maintain stability, defeat the insurgency and mentor the Crisis Response Unit (CRU).

## **TF81 Mission:**

TF 81 is to enable the CRU operational capability and disrupt INS threat groups in order to provide a sustainable security environment.

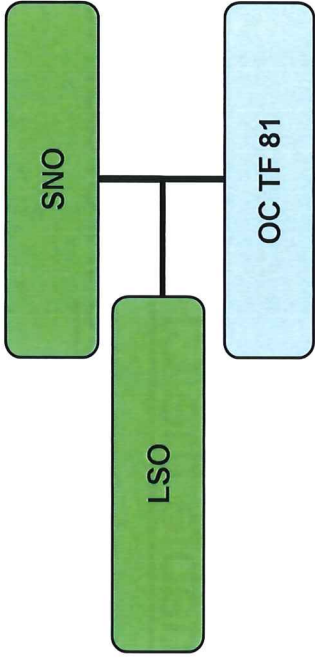
~~NATO/ISAF SECRET~~



# TF 81 STRUCTURE

PSR(S)2, PSR(S)3

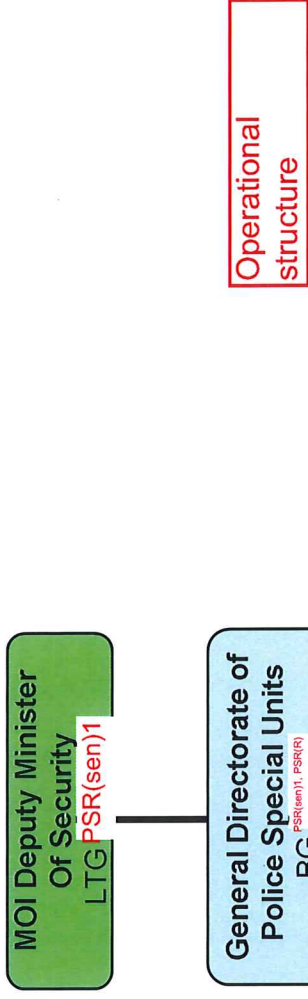
PSR(S)2, PSR(S)3



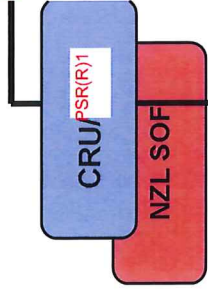
Operational structure

# PSR(S)2, PSR(S)3

# GDPSU



PSR(S)1, PSR(S)2, PSR(S)3

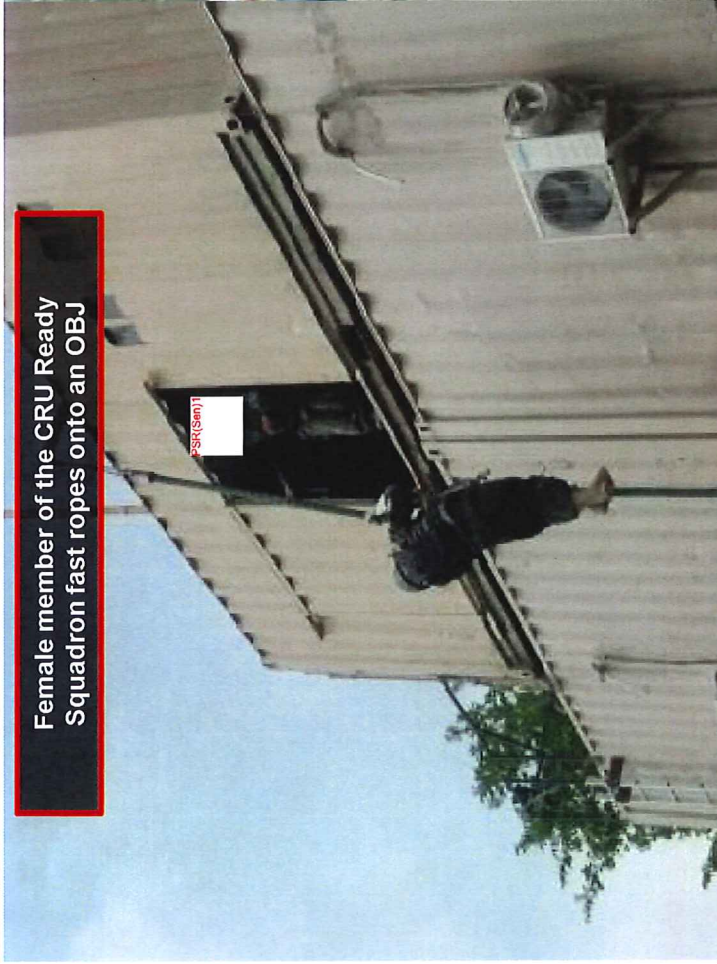


PSR(S)1, PSR(S)2, PSR(S)3

# - CRU LINE DIAGRAM PSR(S)1, PSR(S)2, PSR(S)3

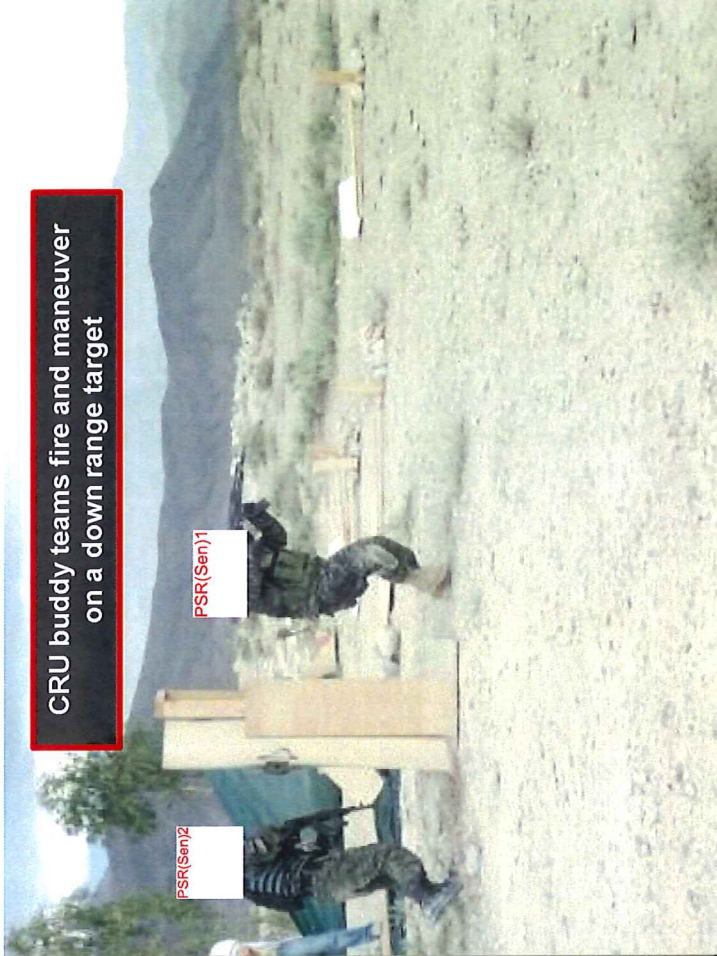


Female member of the CRU Ready Squadron fast ropes onto an OBJ



PSR(Sen)1

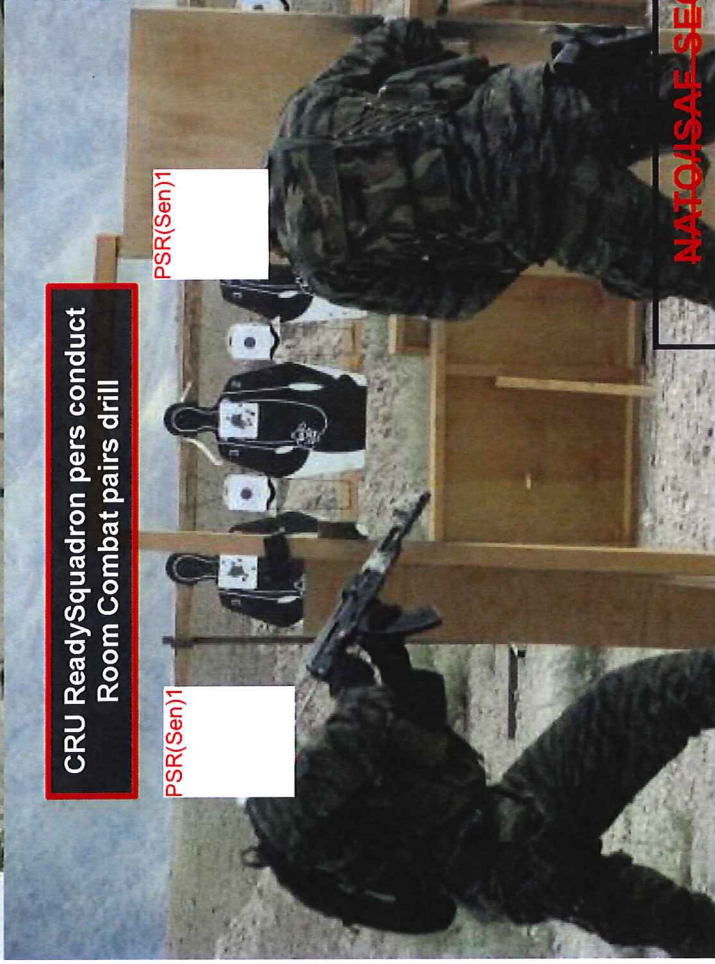
CRU buddy teams fire and maneuver on a down range target



PSR(Sen)2

PSR(Sen)1

CRU ReadySquadron pers conduct Room Combat pairs drill



PSR(Sen)1

PSR(Sen)1

CRU female team members train alongside their male counterparts



PSR(Sen)1

PSR(Sen)1

~~NAI/USAF SECRET ROI-GIROA~~

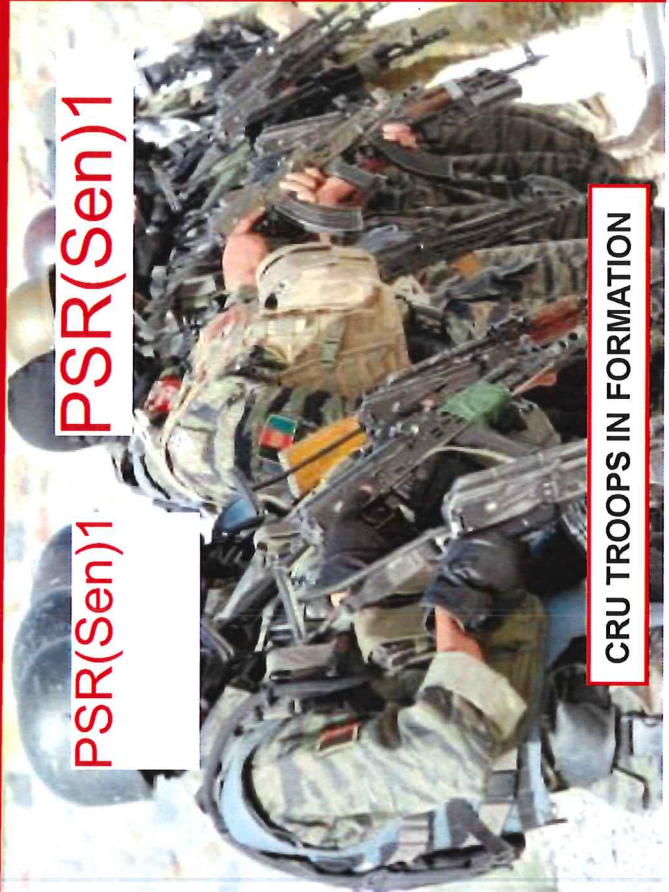
**STORYBOARD - MOI - AIR INTERDICTION UNIT AND CRISIS RESPONSE UNIT  
QRF TRAINING - 29 MAY 10**



**CRU TROOPS PROTECT AIU Mi17**



**CRU TROOPS DISMOUNT AIU Mi17**



**CRU TROOPS IN FORMATION**



**AIU Mi17 LIFTS OFF**

# DEVELOPMENT

- Personnel
    - Selection, fitness tests, deselect unsuitable personnel
  - Equipment
    - Op Result
  - Operations
    - Ops Planning / Command Course
  - Infrastructure
- PSR(R)1**

**PSR(S)1, PSR(S)2, PSR(S)3**

# DETENTION OPERATIONS



**NATO/ISAF SECRET**

Ref your brief to MINDEF and CDF you should be prep to discuss the detainee issue if it was to arise, but be careful the Min has a PHD in law so see's things in a different light to us. He may wish to better understand how the process works from targeting to capture and the details around that incl how the CRU and or NDS detain physically and how they are transferred between the two Govt agencies. He would also be interested in how we go about advising HQ ISAF and what actions do they take if any. **PSR(R)1**

. The two have an office call with COMISAF so may will ask him about the process and whether he is satisfied with the Govt detention facilities. I would be wary of going down the path of explaining in detail the biometric recording other than to say all detainees are biometrically enrolled and data is held by HQ ISAF

# DEFINITION – PARTNER ENABLED OPERATIONS

- Partnered operations do not establish a transfer of authority between ISAF and the ANSF. The ANSF is the supported command and ISAF is the supporting command. In respect to GIROA led operations which see ANSF assume the lead with ISAF in support, these enabled operations will require:
  - The Operation to be planned and Authorised by GIROA
  - GIROA is responsible for incident management.
  - The ANSF element is responsible for battlespace deconfliction with other ANSF Units.
  - The operation will be visibly identifiable as Afghan led coupled with an ANSF request for ISAF combat enablers.

**SECRET**

# DETENTION GUIDELINES

- TF 81 is authorised to detain where ANSF are not present or reasonably available to do so.
- All TF81 operations are partnered with ANSF who are the sole detaining authority for the operation.
- TF 81 enable <sup>PSR(R)1</sup> operations under an MOI Arrest Warrant signed by an MOI prosecutor and executed by <sup>PSR(R)1</sup> (partner enabled operation).
- TF 81 assists in planning and conduct of operations but does not conduct the detention itself.
- TF 81 has not detained anyone since operations commenced last year. ANSF has detained <sup>PSR(C)1</sup> on partnered operations with TF 81 <sup>PSR(C)1</sup> of which were detained by NDS.



# DETENTION PRACTICES

- **PRIOR TO OPERATION –**
  - IAW GIRoA criminal law only a state prosecutor or a judge may issue an arrest warrant.
  - Current TF 81 SOP is to not assist in conducting a detention operation without an arrest warrant signed by an MOI prosecutor who is satisfied that there is enough evidence to judicially prosecute an individual.
  - The MOI prosecutor deploys with TF 81 and **PSR(R)1** on all enabled operations after a signed copy of the arrest warrant is scanned and emailed to HQ ISAF SOF.

**SECRET**

# DETENTION PRACTICES

- **DURING OPERATION** –
  - **CRU** **PSR(R)1** is first through the door and is the “detaining force”.
  - MOI Prosecutor is responsible for evidential collection and ensuring detention is carried out IAW GIROA law and international humanitarian law.
  - **PSR(R)1** detains the individual and completes required documentation.
  - TF 81 observes detention process. Troops have been ordered via ROE Briefs to report any observations which would indicate any mistreatment of ANSF detainees. (NOTE: Not one incident of detainee mistreatment has ever been observed)

# DETENTION PRACTICES

- **POST OPERATION 1** –
  - TF 81 reports <sup>PSR(R)1</sup> detainee details to ISAF SOF IAW ISAF Detention Notification Directive 13 Apr 10.
  - TF 81 LSO follows up on detainees and enters obtained details on an informal ANSF detention database. The limitations are as follows:
    - TF 81 does not have a legal right to detainee information as the matter is the responsibility of the sovereign GIRoA.
    - The information obtained is ad hoc and necessitates goodwill and a network of contacts that is constantly evolving.
    - It is the responsibility of ANSF to report their detainees to ICRC.
    - The ICRC will not release any known ANSF detainee details to TF 81 IAW their doctrine of neutrality.

**SECRET**

# DETENTION PRACTICES

- **POST OPERATION 2** –
  - As TF 81 is not the detaining authority we have no right at law to obtain information about detainees who were captured during ANSF detention operations.
  - However, TF 81 notes the moral obligation and does make best efforts to informally track detainee progress via a network of contacts within GIRoA, ISAF and the diplomatic community.
  - The recent UK judgment does not address the issue of NZDF obligations that may arise if a person owing allegiance to Afghanistan is arrested or detained by Afghan authorities.
  - TF 81 LSO will be following this matter up with **PSR(R)1**

# DETENTION OPERATIONS



PSR(R)1, PSR(sen)1

Republic of Afghanistan Ministry of Interior



PSR(R)1, PSR(sen)1

GIRoA / ISAF Partnering Operation

## Warrant of Arrest:

Who:

PSR(R)1, PSR(sen)1

PSR(R)1, PSR(sen)1

When:

PSR(sen)1, PSR(R)1

This arrest warrant is served on the above named person for suspicion of terrorist activities within the Islamic Republic of Afghanistan.

Pashto content

This warrant will be effective on signature of the official undersigned GIRoA

Unrelated operation outside of Terms of Reference

THERE IS SUSPICION EVIDENCE  
THAT THESE INDIVIDUAL  
SHOULD BE DETAINED.

SECRET

# PSR(S)2, PSR(S)3

Summary of unrelated operation given as example

# PSR(S)2, PSR(S)3

Summary of unrelated operation given as example

# FUTURE OPERATIONS



SECRET



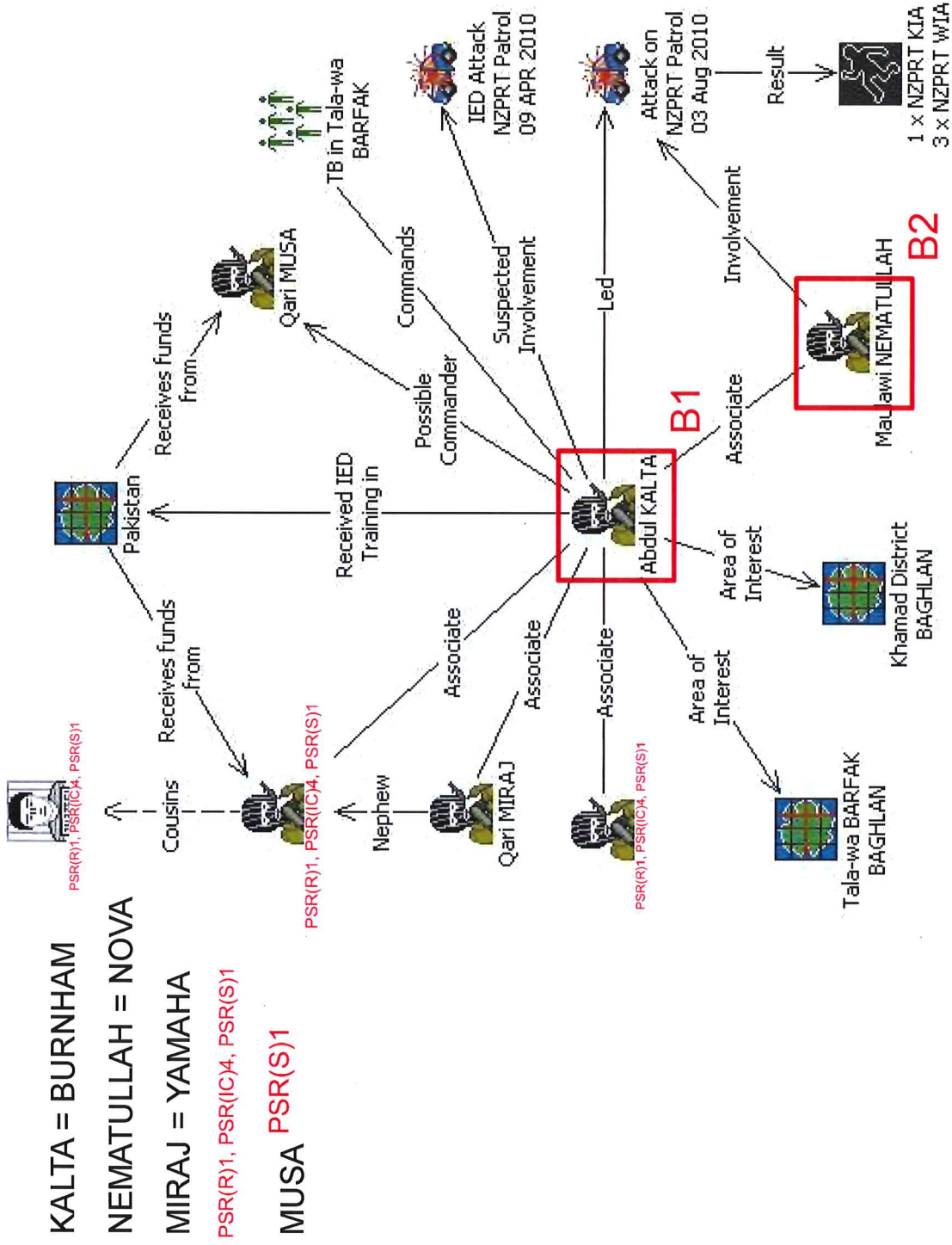
# OBJECTIVE BURNHAM

**Who:** TF81 (PSR(R)1, PSR(C)2 FSN CRU)  
**What:** DELIBERATE DETENTION OPERATION  
**Where:** TALAWE BERFAK DISTRICT, BAGHLAN PROVINCE  
 (A1 - 42SVD2303691463, A2 - 42SVD2307591473, A3 - 42SVD2309291151)  
**When:** ON TRIGGER. (PERIOD OF DARKNESS 21-22AUG 10)  
**Why:** DISRUPT INSURGENT NETWORK ELEMENTS PLANNING ATTACKS ON ANSF / COALITION FORCES AND LOCAL POPULATION AND ENHANCE THE AUTHORITY AND LEGITIMACY OF GIROA.



**NATO/ISAF SECRET**

# INS Link Chart



**NATO//SAF-SECRET**



ISR Asset

PSR(S)1

Assault Force

HLZ Security Force

AC-130  
2300  
0400

2 x CH-47  
0030  
0050

2 x AH-64  
0020  
0200

H-HR 0030

**NAI/ISA/SECRET**

# Intelligence Summary

- Targeting of **PSR(Sen)1** and MUSA from May 10
  - Use of residual Intelligence Surveillance and Reconnaissance to gain Pattern of Life/Bed Down Location
  - **PSR(R)2, PSR(R)3**
- Following 3 Aug NZPRT Troops in Contact
  - Various reporting indicates KALTA involvement in KT2 Troops in Contact
  - Reports identifying Person of Interest/Compound of Interest within TIGARAN Village and other areas of interest
  - Continued use of Intelligence Surveillance and Reconnaissance gaining Pattern of Life ON KALTA (to date 24 Hrs) and other Person of Interest
  - Joint Prioritisation Effects List submitted and approved for KALTA, NEMATULLAH and MIRAJ
  - Continue to conduct liaison with various sources to maintain situational awareness

Unrelated  
operation, outside  
of Terms of  
Reference

PSR(S)2, PSR(S)3

PSR(S)2, PSR(S)3

Unrelated  
operation outside  
of Terms of  
Reference

# TF81 EXTENSION OPTIONS PLANNING



NATO/ISAF SECRET

# SITUATION

- Partnering is a key aspect for the ISAF security arm of nation building in Afghanistan. This is achieved through enabling ANSF capacity.
- The ISAF partnering mission with the CRU will be incomplete in March 2011.
- **PSR(R)1**
- Potential option to maintain a presence in Afghanistan through the continuation of TF81 mentoring and partnering of the CRU.



# PROPOSED MISSION

- TF 81 is to enable the CRU operational capability in order to disrupt INS threat groups and provide a sustainable security environment.

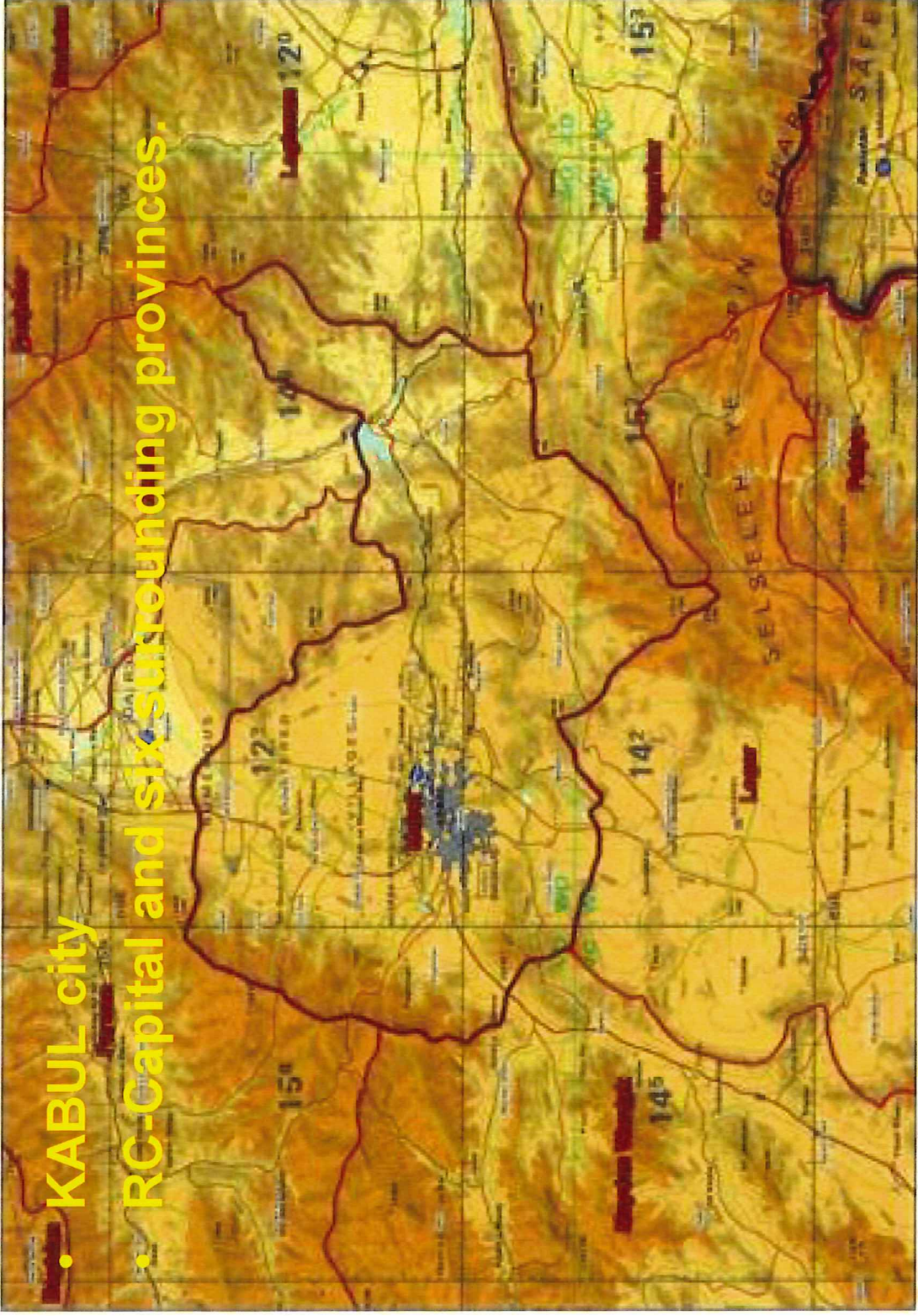
SECRET

# TASKS

- Maintain an effective partnering relationship with the CRU.
- Prevent spectacular attacks in RC-C.
- Disrupt High profile INS attacks in Kabul and six surrounding provinces.
- Develop CRU operational capability.
- NZ National tasks as directed

# GROUND

- KABUL city
- RC-Capital and six surrounding provinces.



SECRET

**PSR(S)2, PSR(S)3**

# ENABLED OPERATIONS

- **Partnering:** A habitual relationship between ANSF and ISAF Units that must pervade all aspects of life for an ANSF Unit through mutual co-operation and a responsibility for planning preparation, execution and post operational assessments towards the achievement of joint operational effects.
- **Mentoring:** Coach and teach ANSF Units, provide the conduit for Command and Control and when required support the operational planning of the ANSF Unit for which they are aligned, in order to support the development of a self sufficient, competent and professional ANSF.

# PARTNERING APPROACH

- ISAF embedded partnering concept requires partner Units where possible to reside with the ANSF unit they partner.
- The entire force would collocate to the new CRU camp to support this msn.
- Huge benefits to being collocated with partner force.
  - Economy of Effort
  - Concentration of Force
  - Simplicity
  - Maintenance of Morale
  - Co-operation
  - Security

**SECRET**

**PSR(S)1**

# QUESTIONS?

PSR(sen)1

PSR(sen)1

PSR(sen)1

PSR(sen)1

“SHONNA BI SHONNA”

“SHOULDER TO SHOULDER”

