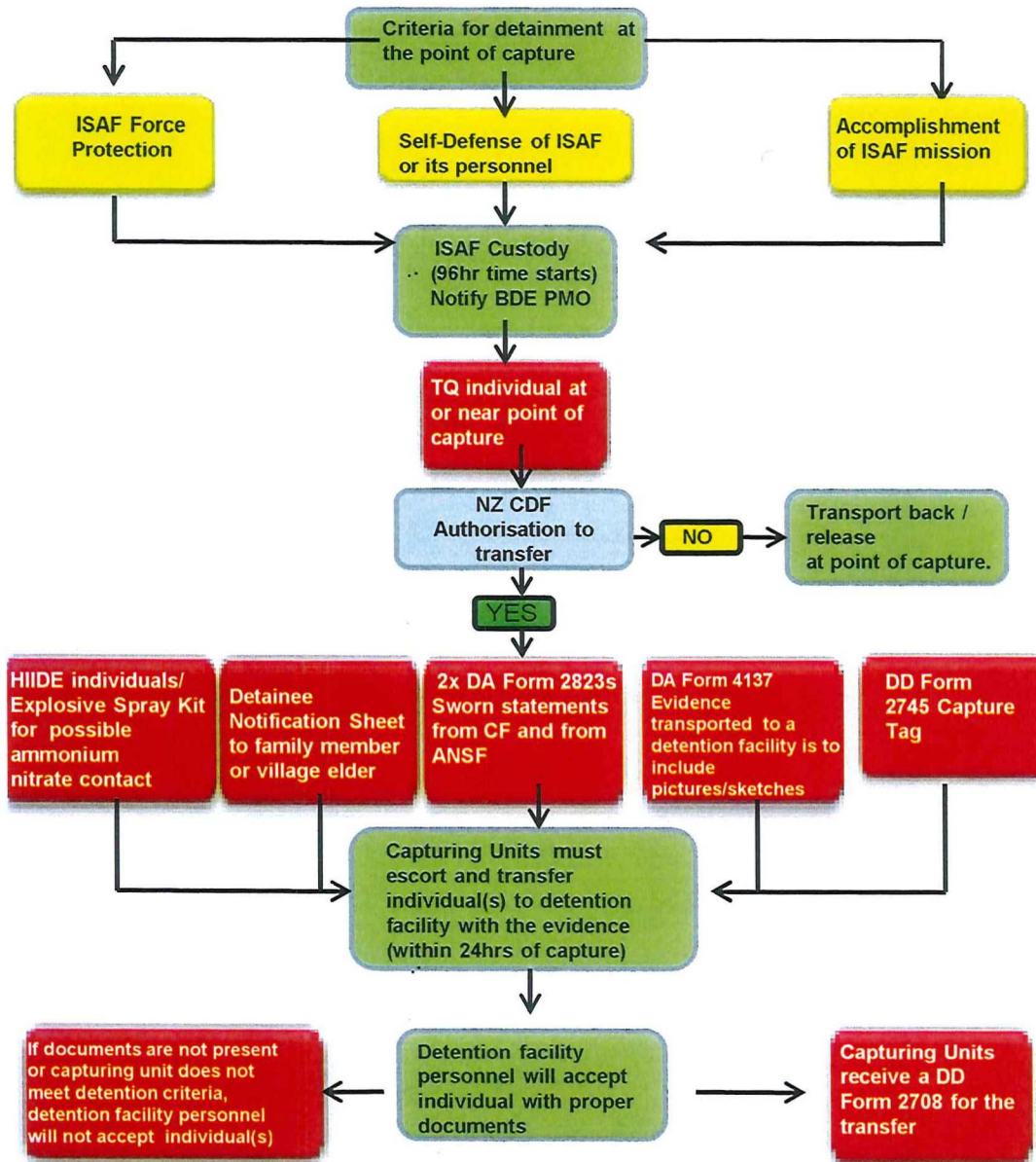


NZFOR ISAF DETENTION POLICY FLOW CHART



Detention Plan:

- NZFOR ISAF is not mandated to conduct detention operations.
- Temporary detention of civilians is authorised if they are interfering with mission accomplishment. Common criminals will not be detained by NZFOR ISAF but will remain the responsibility of the ANSF, who are to effect any necessary arrest.
- Detention of individuals will occur only in circumstances where it becomes operationally necessary, and there are no partner forces (ISAF or ANSF) in the vicinity able to effect the detention.
- In the event that detention becomes necessary, determining if detention of individual(s) is warranted will be in accordance with ISAF SOP 362 criteria and NZDF detention policy.
- Once an individual is detained, he/she will only be asked questions by qualified NZFOR ISAF TQ personnel and only questions relevant and critical to the current mission.

- NZFOR ISAF FE will notify a family member or a village elder prior to leaving the point of capture or transferring to the detention facility. Bde PMO will be notified once notification has been completed.

Transfer Plan:

- NZ CDF (Chief of Defence Force) approval is required prior to any transfer of NZFOR ISAF detainees.
- Captured individual(s) that meet the criteria for detention and are approved for transfer by NZ CDF will be transferred to the detention facility pending determination of continued detention. All evidence in respect of the detainee will be inventoried and transferred to the detention facility with the detainee.
- If a NZFOR ISAF detainee is to be transferred to a detention facility, in addition to NZ CDF approval, the US Military requires an exchange of letters in order to accept the transfer. This is to be actioned through the NZ Defence Attaché in Washington DC to the Under Secretary of Defence at the Pentagon. This will require immediate involvement of the NZFOR ISAF LSO, in order to draft the necessary documents as soon as possible after capture.
- Prior to detainee(s) transfer to U.S. Custody for possible transfer to the detention facility, a request also needs to be submitted to the DC-DO, USFOR-A for approval. NZFOR ISAF detainees transferred to ISAF custody will go to the Bde detention facility.
- The NZFOR ISAF LSO is to be contacted by the NZFOR ISAF HQ without delay in the event of any detention by NZFOR ISAF.
- Bde PMO will get a notification on when the individual will be arriving at the detention facility.

- Transfer of detainees from ANSF to ISAF custody requires CJIATF 435 approval and also NZ CDF approval as per details above.

Evidence:

- ALL evidence will be transferred to the detention facility with the individual(s) for exploitation purposes, including evidence from a cache or IED unless volatile, unstable or hazardous for transportation.
- Photographs of individual(s) will be taken in the presence of any and all sensitive site exploitation.