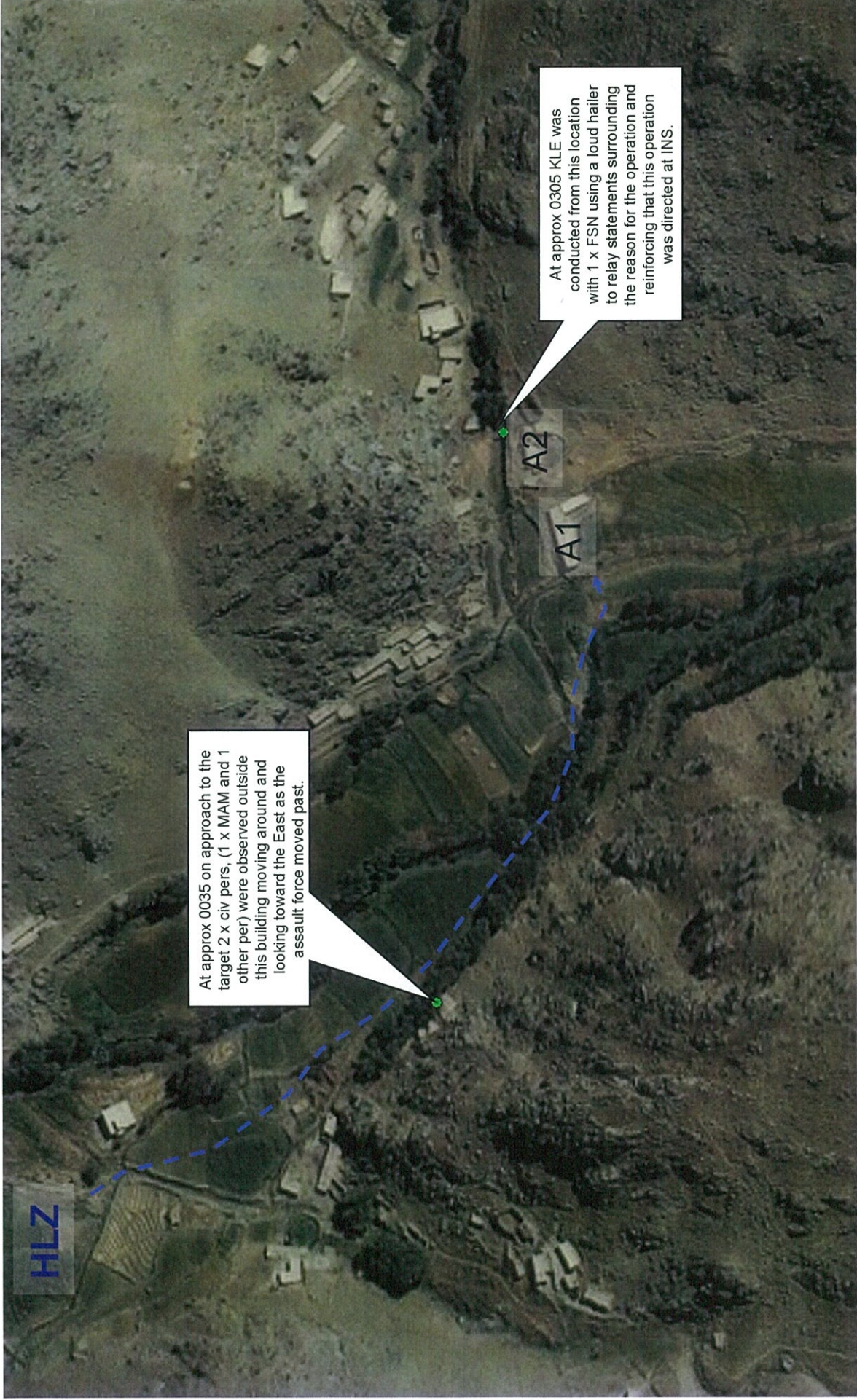


Description of Key Leader Engagement conducted during Obj Burnham. This document was last modified 23 August 2010



At approx 0035 on approach to the target 2 x civ pers, (1 x MAM and 1 other per) were observed outside this building moving around and looking toward the East as the assault force moved past.

At approx 0305 KLE was conducted from this location with 1 x FSN using a loud hailer to relay statements surrounding the reason for the operation and reinforcing that this operation was directed at INS.

