



#81

ORDERS OP RAHBARI
POD 02/03 OCT10

OBJ NOVA






PRELIMS

- Seating
- Sterile on infil
- Atts
- Dets
- GPS load can contain target location, FRV location, and SARDOT
- OPSEC
- Generic Orders

SECRET

Bk21.001.000007

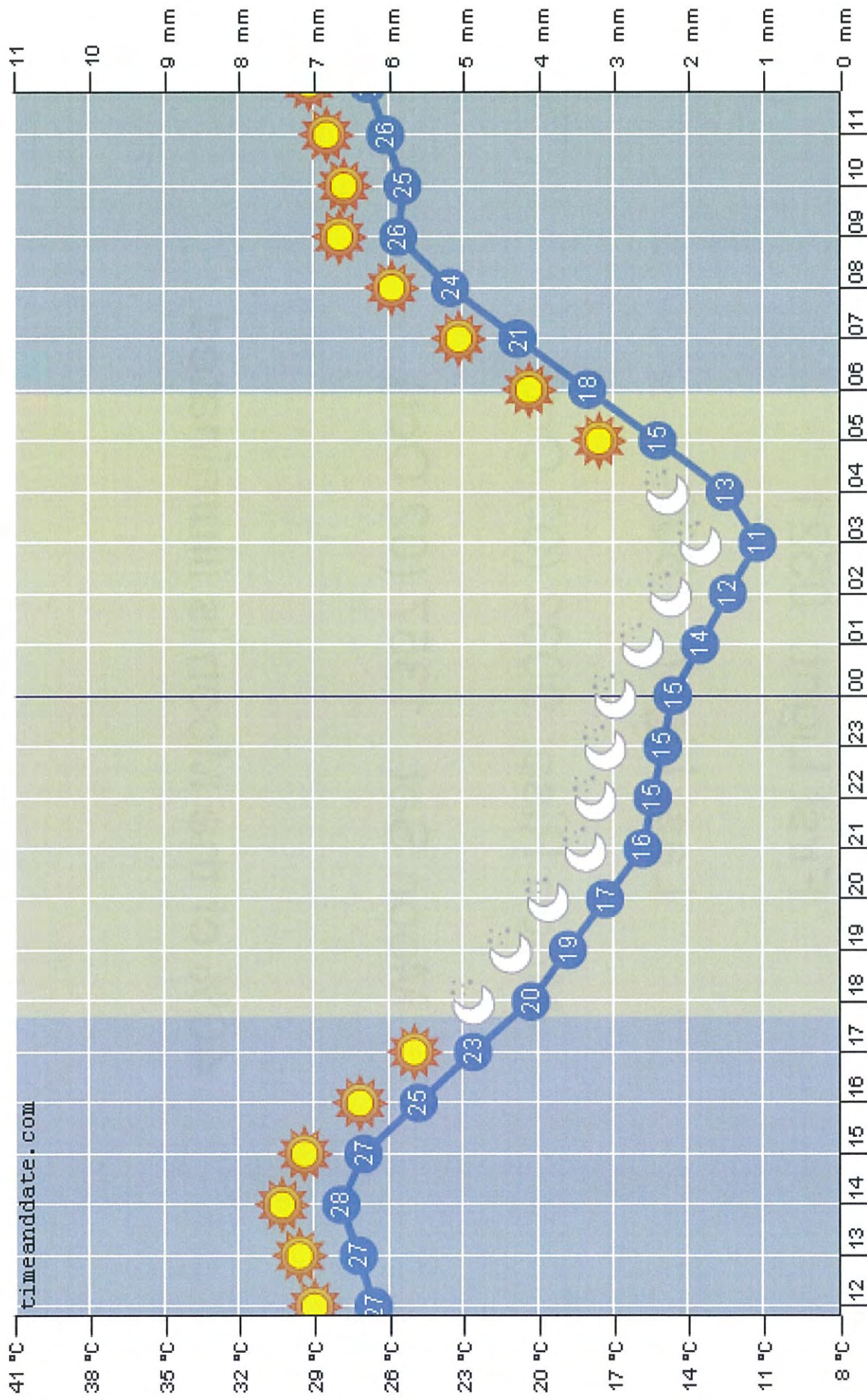
WEATHER For BAMIAN 48hr forecast

	Friday	Saturday	Sunday
	Afternoon	Morning	Night
	Evening	Afternoon	Evening
Weather:	 Sunny.	 Sunny.	 Clear.
Description:	Mild.	Mild.	Cool.
Temperature:	21 °C	19 °C	10 °C
Comfort Level:	21 °C	19 °C	9 °C
Dew Point:	-16 °C	-13 °C	-14 °C
Wind Speed:	14 km/h	13 km/h	8 km/h
Wind Direction:	↓	↘	↘
Humidity:	7%	11%	16%
Visibility:	86 km	80 km	69 km
Chance of Rain:	0%	0%	0%
Amount Rain:	-	-	-

**Forecast next
48 hours**

UNCLASSIFIED

WEATHER for the night of 02 Oct 10



Sun, 3 Oct
Graph indicates clear skies

SECRET

UNCLASSIFIED

Bk21.001.000007

UNCLASSIFIED

Astronomical Data for 02 Oct 10

First Light: 0521

Last Light: 1800

Moon Rise: 0033 (03 Oct)

Moon Set: 1357 (02 Oct)

40% of the Moon is illuminated

SECRET

UNCLASSIFIED

Bk21.001.000007



~~SECRET//REL TO USA, ISAF, NATO~~

81

ORDERS OP RAHBARI
POD 02/03 OCT10

OBJ NOVA



OP TYPE:

DDO

START OF MISSION:

02 2100 OCT10

END OF MISSION:

03 0700 OCT 10

TGT:

**B1: OBJ NOVA / PSR(S)1 (RTAF 2306)
(NEMATULLAH)**

JPEL:

YES

JPEL LIMITATIONS:

NIL

TAO:

**TALAWE BERFAK DISTRICT
BAGHLAN PROVINCE
42S VD 23036 91463**

GIROA APPROVAL:

MOI PROSECUTOR

RC CONCURRENCE:

**MG PSR(S)1 (Approved 28 SEP 10)
Conditions: LO to TOC, Soft Knock, KLE
engagement**

~~SECRET~~

Bk21.001.000007

MULAWI NEMATULLAH (RTAF1719) – OBJ NOVA

FUNCTION:

- Mulawi NEMATULLAH is a TB Sub Commander under **PSR(sen)1** in Tala Wa Barfak District Baghlan.
- He directs and conducts attacks in Bamian AO, AI.

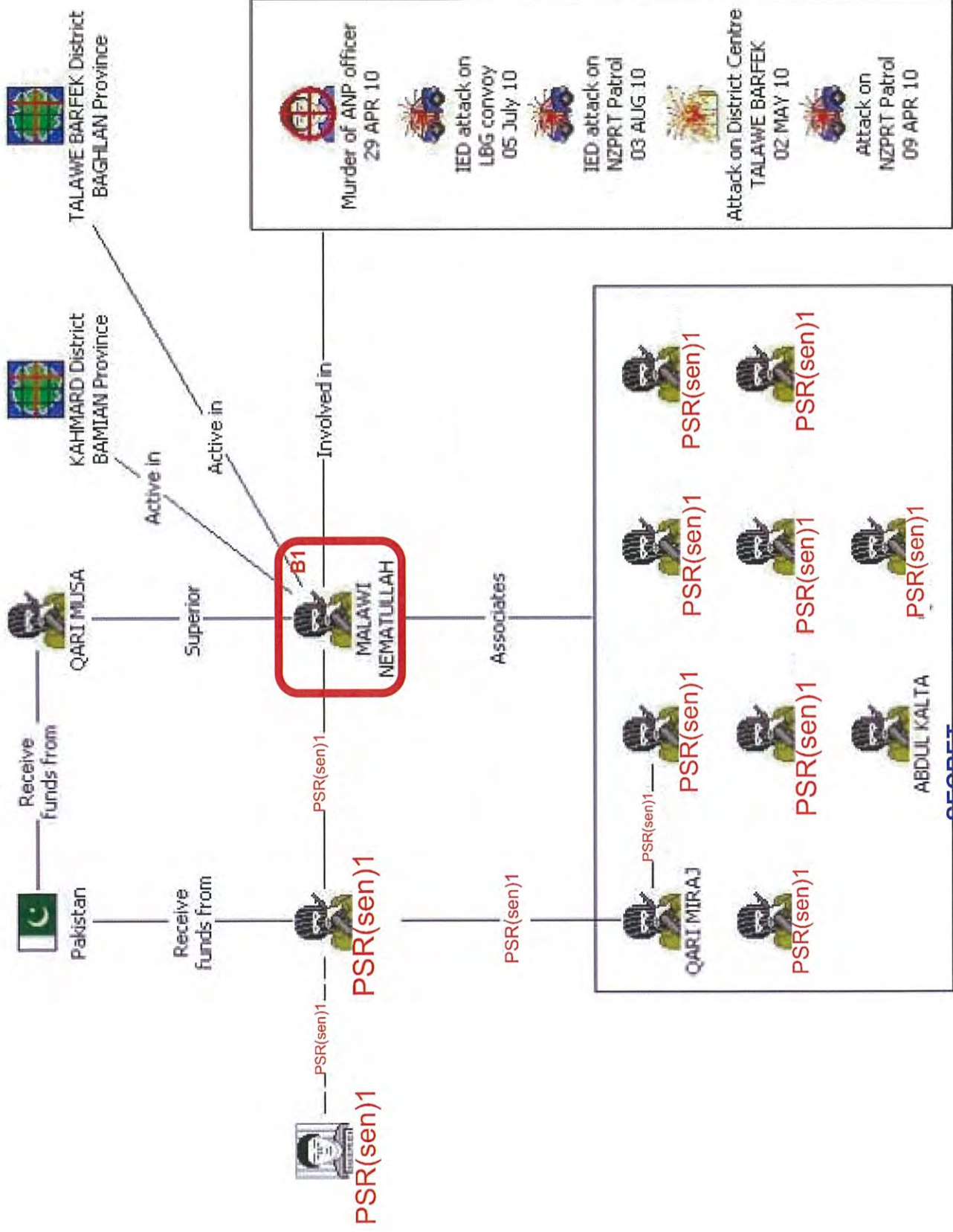
SIGNIFICANCE:

- Mulawi NEMATULLAH is a TB Sub Commander who leads attacks on CF and is involved in TB insurgent activity in the Kahmard district of Bamian Province, and Tala-wa Barfak district of Baglan.

EXPECTATION:

- Mulawi NEMATULLAH's removal would remove a key figure coordinating and carrying out insurgent activity in both Bamian Province and Tala Wa Barfak District, Baghlan Province.
- Engaging Mulawi NEMATULLAH's would remove one of the key elements behind the IED attacks on ^{PSR(sen)1} and CF.
- This would improve public confidence in ANP and aid in rebuilding ANP morale in the area.

~~SECRET~~





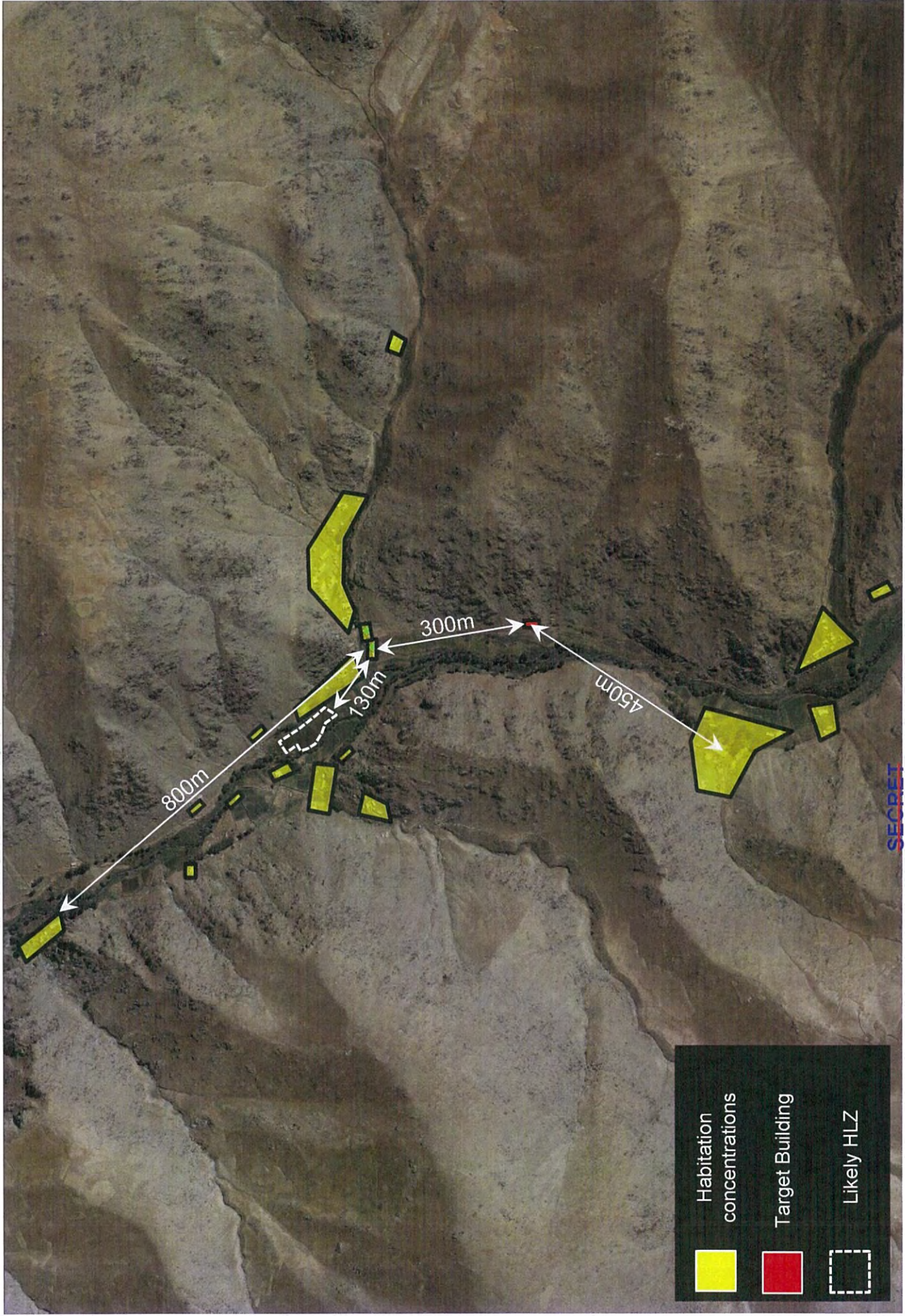
SECRET RELISAF



SECRET

SECRET RELISAF

BK21.001.000007



OP PSR(S)1

ISAF SOF
BAGHLAN, AF

SECRET//REL TO USA, FVEY
SECRET//REL TO USA, FVEY

PSR(S)1

OBJ TBC QARI MUSA ICW PSR(sen)1. PG COLLECTED AT
1030Z, HCT AF 1034Z, AND HC 2 AT 1038Z. MULTIPLE
PERSONNEL OBSERVED IVO COMPOUND.

PSR(S)1

01.000007

OP/PSR(S)1
ISAF SOF
BAGHLAN, AF

SECRET//REL TO USA, ISAF, NATO

PSR(S)1

THREE TARPS ON ROOF TOP WITH POSSIBLE HME
DRYING ALONG WITH FOUR PERSONNEL OBSERVED.

01.000007

OP **PSR(S)1**
ISAF SOF
BAGHLAN, AF

SECRET//NOFORN//NOFORN//NOFORN//NOFORN

PSR(S)1

THREE TARPS ON ROOF TOP WITH POSSIBLE HME
DRYING OBSERVED.

01.000007

OP PSR(S)
ISAF SOF
BAGHLAN, AF

SECURITY//REL TO USA, ISAF, NATO

PSR(S)1

FIVE POSSIBLE EMPTY SACKS OBSERVED. POSSIBLE
SACKS COULD BE ASSOCIATED WITH POSSIBLE HME.

01.000007

OP **PSR(S)**
ISAF SOF
BAGHLAN, AF

~~SECRET//REL TO USA, ISAF, NATO~~

PSR(S) 1

~~SECRET~~

~~SECRET//REL TO USA, ISAF, NATO~~

COMPOUND A3 OVERVIEW.

01.000007



TF 81

ORDERS OP RAHBARI
POD 02/03 OCT10

OBJ NOVA



TASKORG

TF 81
Camp Warehouse

TF81 = ^{PSR(S)1, PSR(S)2, I}

CRU

Misc

TOTAL FORCES DEPLOYED = ^{PSR(S)1}

SOCCE



PSR(S)2, PSR(S)3

SECRET

Bk21.001.000007



81

ORDERS OP RAHBARI
POD 02/03 OCT10

OBJ NOVA



MOVE TO KIWIBASE ROTARY LOAD PLAN

PSR(S)1, PSR(S)2, PSR(S)3

SECRET

Bk21.001.000007



81

ORDERS OP RAHBARI
POD 02/03 OCT10

OBJ NO/A



ROTARY LOAD PLAN INFIL/ EXFIL

PSR(S)1, PSR(S)2, PSR(S)3

~~SECRET~~

Bk21.001.000007



81

ORDERS OP RAHBARI
POD 02/03 OCT10

OBJ NO/A



TASK
FORCE

FRIENDLY FORCES

- RC-North: LNO
- PRT
- NDS Receiving detainees in Kabul
- Battle Space Handover Conducted in TOC
- **PSR(S)1**
- **PSR(S)2, PSR(S)3**

SECRET

Bk21.001.000007



AF81

ORDERS OP RAHBARI
POD 02/03 OCT10

OBJ NOVA



TASK FORCE

AIR SUPPORT

PSR(S)1, PSR(S)2, PSR(S)3

- AC-130 acting as CAirS and ISR platform
- **PSR(S)1**
- **PSR(S)1, PSR(S)2, PSR(S)3**
- **PSR(S)1, PSR(S)2, PSR(S)3**
- **ISR PSR(S)1**
- **MEDEVAC** PSR(S)1, PSR(S)2, PSR(S)3
- **CAS** PSR(S)1, PSR(S)2, PSR(S)3
- **PSR(S)1, PSR(S)2, PSR(S)3**

SECRET



TF81

ORDERS OP RAHBARI
POD 02/03 OCT10

OBJ NOVA



MISSION

TF81 is to conduct HAF DDO on Obj NOVA in vic of TIGIRAN Village, BAGLAN over POD 02/03 Oct IOT disrupt BAGLAN INS atk network and increase sy of BAMYAN province.

SECRET

Bk21.001.000007



TF81

ORDERS OP RAHBARI
POD 02/03 OCT10

OBJ NOVA



EXECUTION GEN OUTLINE

- Intent: HAF DDO into TALAWE BERFAK DISTRICT BAGHLAN PROVINCE by night staging through BAF.
- 3 Phase operation with a Prelim
- Prelim Battle Prep and Prelim move to BAMYAN by Helo
- Phase 1 Infil
- Phase 2 Clear A 1 and 3
- Phase 3 Exfil
- Endstate:
 - B1 captured, TSE complete, handed over to KABUL NDS Prosecutors, TF81 at CW re-constituted for future tasks.

SECRET

Bk21.001.000007



#81

ORDERS OP RAHBARI
POD 02/03 OCT10

OBJ NOVA

PRELIM

PSR(S)2, PSR(S)3

- Tasks All
 - Force Comd to give specific orders and conduct rehearsals.
 - Battle prep at CW
 - Admin move CW to Bamyan evening of 02 Oct. Depart from CW 2300.
 - Comms check PSR(S)2, PSR(S)3
 - HLZ Force and ARF: Ensure CRU famil with helo and actions on gnd.

SECRET

Bk21.001.000007



81

ORDERS OP RAHBARI
POD 02/03 OCT10

OBJ NOVA



PHASE 1 INFIL

PSR(S)2, PSR(S)3

- Depart CW in load plan.
- HLZ Force: HLZ secured ^{PSR(S)2, PSR(S)3}
- Aslt Force: **PSR(S)2, PSR(S)3**
- ^{PSR(S)2, PSR(S)3} coms to SOCCE
- ARF: Be prep to deploy to interdict squirter ^{PSR(S)2, PSR(S)3}

SECRET



AF81

ORDERS OP RAHBARI
POD 02/03 OCT10

OBJ NOVA



TASK FORCE

PHASE 2 Clear A3

PSR(S)2, PSR(S)3

- Aslt Force clear A3 and detain B1.
- HLZ force be prep to clear A1 as part of sy.
- Conduct call out, EMOE if req.
- Separate MAMs. Be prep for Women and children.
- Conduct KLE if appropriate
- Conduct exploit.
- **PSR(S)2, PSR(S)3**
- Details of specific operational taskings
- **PSR(S)2, PSR(S)3**

SECRET

Bk21.001.000007



81

ORDERS OP RAHBARI
POD 02/03 OCT10

OBJ NO/A



PHASE 2 A3 Cont

PSR(S)2, PSR(S)3

- ARF: Be prep to deploy to interdict squitters **PSR(S)2, PSR(S)3**

Details of specific
operational
taskings

- **ME: Detain B1**

SECRET



81

ORDERS OP RAHBARI
POD 02/03 OCT10

OBJ NOVA

TASK FORCE

PHASE 3 Exfil

PSR(S)2, PSR(S)3

PSR(S)2, PSR(S)3

Details of specific
operational
taskings

SECRET

BK21.001.000007



81

ORDERS OP RAHBARI
POD 02/03 OCT10

OBJ NOVA



COORDINATING INSTRUCTIONS TIMINGS

Task	Resp	Remarks
PSR(S)1, PSR(S)2, PSR(S)3		

SECRET

Bk21.001.000007



#81

ORDERS OP RAHBARI
POD 02/03 OCT10

OBJ NO/A



TASK FORCE

TIMELINE

PSR(S)1, PSR(S)2, PSR(S)3

SECRET

Bk21.001.000007



81

ORDERS OP RAHBARI
POD 02/03 OCT10

OBJ NOVA



ACTIONS ON

- **Squitter**
 - Call it and cont to observe
 - ARF
 - Be prep to guide on

- **Separated**

PSR(S)2, PSR(S)3

Details of specific
operational
taskings

- **L**
PSR(S)2, PSR(S)3

SECRET



81

ORDERS OP RAHBARI
POD 02/03 OCT10

OBJ NO/A



ACTIONS ON

- Squirter
PSR(S)2, PSR(S)3
- Separated
PSR(S)2, PSR(S)3
- Lost
PSR(S)2, PSR(S)3

Details of specific
operational
taskings

SECRET

Bk21.001.000007



81

ORDERS OP RAHBARI
POD 02/03 OCT10

OBJ NOVA



ACTIONS ON

- Helo breakdown

PSR(S)2, PSR(S)3

- Helo Crash

PSR(S)2, PSR(S)3

Details of specific
operational
taskings

- Contact

PSR(S)2, PSR(S)3

SECRET

Bk21.001.000007



81

ORDERS OP RAHBARI
POD 02/03 OCT10

OBJ NOVA



TASK FORCE

ACTIONS ON

- Link up with another Force
PSR(S)2, PSR(S)3

- No exfil

PSR(S)2, PSR(S)3

Details of specific
operational
taskings

- Loss of Communications
PSR(S)2, PSR(S)3

SECRET

Bk21.001.000007



81

ORDERS OP RAHBARI
POD 02/03 OCT10

OBJ NO/A



NZPRT SUPPORT

- FARP
- Sy for helos post infil
- Doctor and Stabilisation Post: Post CASEVAC Pre Medevac
- Providing Source for PID of detained MAMs

~~SECRET~~



81

ORDERS OP RAHBARI
POD 02/03 OCT10

OBJ NOVA



TASK FORCE

CSS

- Generic
PSR(S)2, PSR(S)3

SECRET

Bk21.001.000007

Dress	
Equipment	
Wpns	
Ammo	Details of specific kit employed
PSR(S)2, PSR(S)3	
Rats	
Water	
Med	

PSR(S)2, PSR(S)3

PSR(S)2, PSR(S)3



#81
ORDERS OP RAHBARI
POD 02/03 OCT10
OBJ NOVA
TASK FORCE

MED

- medics to provide med spt (friendly force or CIVCAS).

PSR(S)2, PSR(S)3

Details of specific
operational
taskings

SECRET

Bk21.001.000007

Medical Treatment:
Level 1: Buddy aid and 3x Adv Medics at CCP.
 TF 81 allocated primary medic to assign CCP, direct CASEVAC/MEDEVAC related duties and oversees triage MEDEVAC platform stabilization en route and MASCAL contingency.
Level 2: Resuscitative /stabilisation & Surgical Capability at ISAF Role 2 / 3 (BAF Role 3 / KAIA Role 3 / PEK Role 2).
Level 3: BAF R3

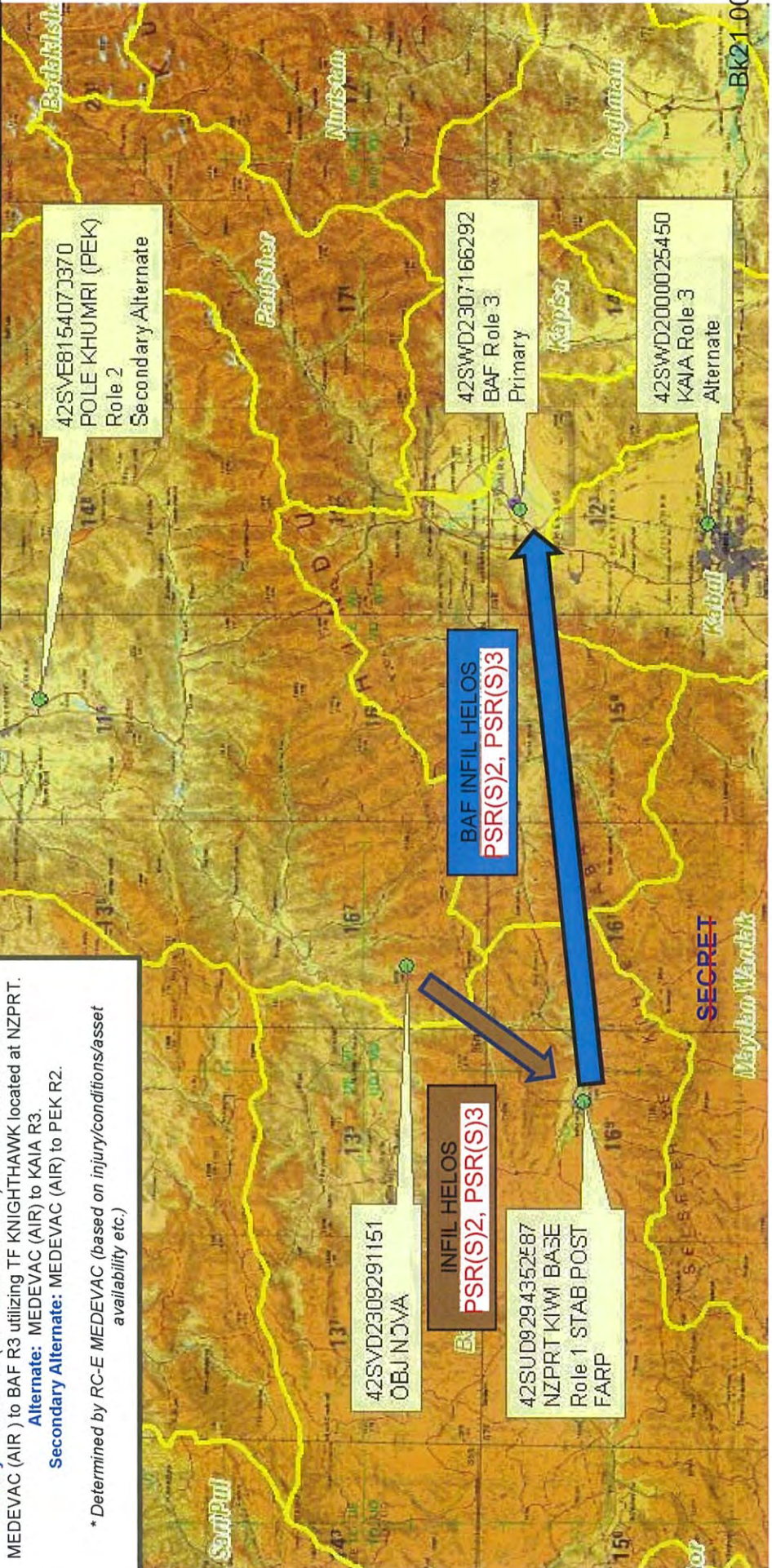
Evacuation:
Primary: CASEVAC (Air- 4CAB Infil helos) to NZPRT Role 1 then MEDEVAC (AIR) to BAF R3 utilizing TF KNIGHTHAWK located at NZPRT.
Alternate: MEDEVAC (AIR) to KAIA R3.
Secondary Alternate: MEDEVAC (AIR) to PEK R2.

* Determined by RC-E MEDEVAC (based on injury/conditions/asset availability etc.)

COMMS PLAN:
PSR(S)2, PSR(S)3

MEDEVAC PLAN:
 P: Treat on site, Air MEDEVAC BAF (R3)
 A: Treat on site, Air MEDEVAC KAIA (R3)
 SA: Treat on site, Air MEDEVAC PEK (R2)

MTF	PRI/ALT	LOC	TOTAL DIST	FLT TIME (INCLUDES 20 MINS RT)
BAF R3	PRI	OBJ	PSR(S)2, PSR(S)3	
KAIA R3	ALT	OBJ		
PEK R2	SEC ALT	OBJ		
BAM R1 STAB POST	PRI ALT SEC ALT	OBJ		





81

ORDERS OP RAHBARI
POD 02/03 OCT10

OBJ NOVA



RTN TO CW

PSR(S)2, PSR(S)3

SECRET

Bk21.001.000007



81

ORDERS OP RAHBARI
POD 02/03 OCT10

OBJ NOVA



TASK
FORCE

COMMAND AND SIGS

PSR(S)2, PSR(S)3

SECRET

Bk21.001.000007

PSR(S)2, PSR(S)3

PSR(S)2, PSR(S)3



81

ORDERS OP RAHBARI
POD 02/03 OCT10

OBJ NOVA



RECOGNITION PSR(S)2, PSR(S)3

SECRET

Bk21.001.000007



81

ORDERS OP RAHBARI
POD 02/03 OCT10

OBJ NO/A



EXECUTION CHECKLIST

PSR(S)2, PSR(S)3



81

ORDERS OP RAHBARI
POD 02/03 OCT10

OBJ NOVA

TASK FORCE



- Battle Brief
- Reasons to do this job.
- Complexity, sequential. SA
- Appropriate response. Control of CRU.
- Flexibility
- ROE
- Time check
- QUESTIONS

~~SECRET~~